

# Rainspan™ Corium



Part of Eurobond Laminates range of architectural facade systems

**eurobond**

delivering low risk building solutions

# Rainspan™ Corium

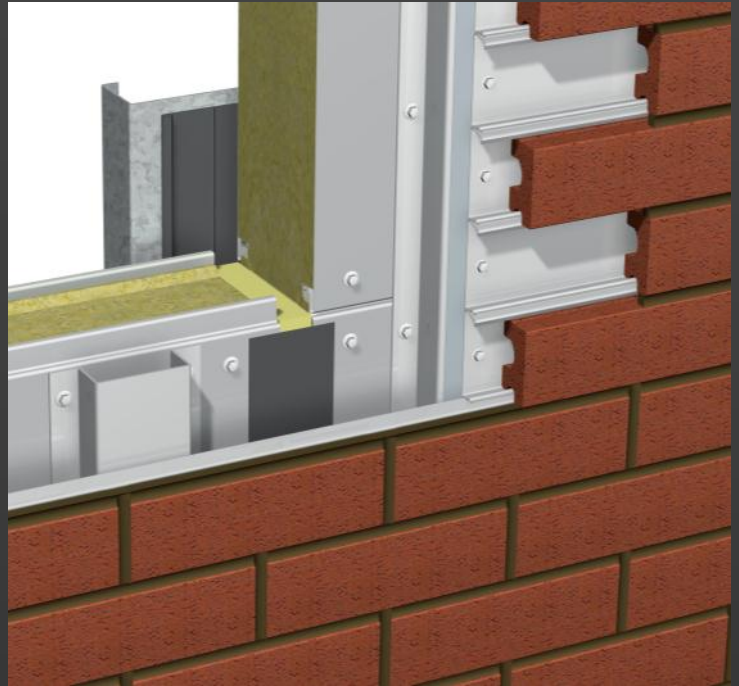
Rainspan™ Corium is a partnership between Eurobond Laminates and Taylor Maxwell for their architectural brick tile façade system. The system comprises of Eurobond's Rainspan™ composite panel offering excellent fire, acoustic, thermal and structural performance behind Corium's brick tile façade. This combined system creates a unique building solution with a number of inherent benefits:

- All Rainspan™ systems utilise a non-combustible stone wool core and are fully tested to provide guaranteed fire resistance of up to two hours
- Fire rated spans of up to 7.5 metres reduce the need for secondary steelwork, lowering overall building costs
- Rainspan™ is quick and easy to install, allowing a weathertight building envelope to be created, removing the rainscreen installation from the critical path
- All Rainspan™ systems help to reduce operational carbon and achieve BREEAM excellent rated buildings by providing U-values as low as  $0.23\text{w/m}^2\cdot\text{k}$
- The Rainspan™ system provides continuity of thermal performance and 'as tested' air tightness of  $<1\text{m}^3\cdot\text{hr/m}^2$  well in excess of the requirements of ADL2 2010
- System fasteners are available, specifically designed to eliminate over-tightening
- Rainspan™ has a high recycled content, both steel and stone wool can be recycled at end of life

# Eurobond Rainspan™ Structural Support Panel

## APPLICATION

The Rainspan™ system is fully tested and has been developed as a robust, interlocking, insulated panel, with long fire-rated spans of up to 7.5 metres and an ease of installation that creates a quick, weathertight building envelope. The Rainspan™ system provides the perfect structural support for the Corium facade. The system blends together the benefits of a composite panel and a rainscreen application to provide greater freedom for architectural expression. The panel is finished with an external flat profile creating an 'in-plane' surface to receive the facade carrier.



## STANDARD SPECIFICATION

- Module width of 1200mm
- Rainspan™ panels have an external facing of 0.7 mm gauge steel, finished in standard white RAL9010 from the TATA Colorcoat Prisma range
- Flat external face providing a flat 'in-plane' fixing surface
- A rear air sealed panel system offering exceptionally low air permeability of  $<1\text{m}^3/\text{hr}/\text{m}^2$

NOTE: other specifications/variations are available upon request

## Rainspan™ System Information

### Product Tolerances

Length	± 10 mm		
Width	± 5 mm		
Thickness	± 2 mm		
Joint Gap	± 2mm		

### Dimensions & Weight

Core Thickness (mm)	125	150	175
Weight (kg/m <sup>2</sup> – 0.7/0.7mm)	27	30.5	34

### Thermal Performance

Core Thickness (mm)	125	150	175
U Value (W/m <sup>2</sup> k)	0.33	0.27	0.23

### Acoustic Performance

Core Thickness (mm)	125	150	175
Weighted Sound Reduction Index (Rw)	31.4	32.76	33.1

### Fire Performance

	Fire Resistance (minutes)		Max Unsupported Length (m)	
	Insulation	Integrity	LPS 1208	BS 476 Pt 22
Rainspan™ 125mm	120	120	5.5	10.5
Rainspan™ 150mm	120	120	7.5	11.5
Rainspan™ 175mm	120	120	7.5	12.0



# Rainspan™ Corium



## TECHNICAL OVERVIEW

### Technical precision and quality control

Corium is the unique brick cladding system from Wienerberger Ltd. That combines the natural beauty of genuine brick with cost-effective fast track installation. Corium offers a facing brick finish for projects where a cladding system is required rather than traditional masonry. An innovative and versatile solution, Corium brings exciting new colour and texture combinations to the construction industry, with the reassurance that it is fully industry tested and approved.

### Loads and fixings

Advancements in fixings technology have enabled the tried and tested Rainspan™ Corium system to be designed to withstand the highest of wind loads and to provide support to interfacing elements of glazing and cladding.

### Steel substructure with vertical Aluminium sections

Fast and lightweight, the vertical top hat detail allows for drainage of the wet zone, preventing potentially hazardous moisture build up and micro environment generation. The horizontal steel sections are securely fixed to the top hats which are fixed to the face of the Rainspan panel with tested and approved stainless steel fasteners. Corium brick-tiles are simply clipped into place. The clipping process ensures that consistent horizontal joints are achieved, whilst vertical joint spacing can be adjusted to suit design requirements.

### Technical support

The system is suitable for installation by cladding Contractors with full technical services support available .

- On site or in house training by our dedicated applications Engineers
- Project specific design advice entailing bespoke CAD details and site specific load/span calculations in addition to a full suite of standard details
- Guidance in specifying the most appropriate products to meet project specific requirements.

### Durability

In normal UK conditions, the system has been assessed by to have a life expectancy in excess of 60 years.

### Behaviour in relation to fire

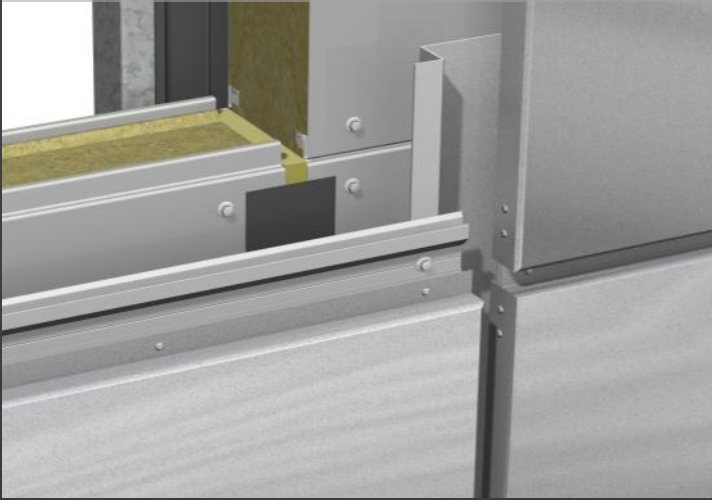
As well as Class 0 surface spread of flame, the Rainspan™ Aerolite system is fire resistant for up to 2 hours according to EN1364-1 and is approved to LPS 1208 for fire resistance. All Rainspan™ panels have stone wool cores which are non-combustible as defined by the Building Regulations applicable to all parts of the United Kingdom and the Republic of Ireland. This includes materials classified as Class A1 in accordance with BS EN 13501-1: 2002 Fire classification of construction products and building elements – Part 1: Classification using test data from reaction to fire tests, when tested to BS EN 13501-1:2002.

### Buildability

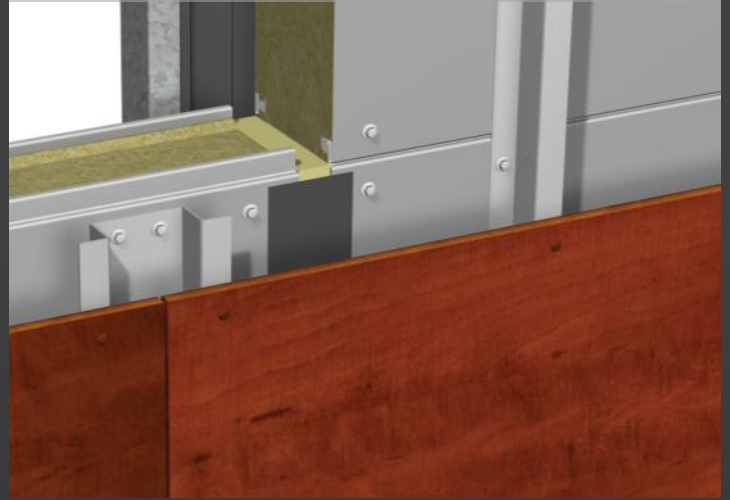
The system is suitable for installation by cladding contractors providing they have undergone suitable training by Eurobond and Taylor Maxwell

# Rainspan™ Systems

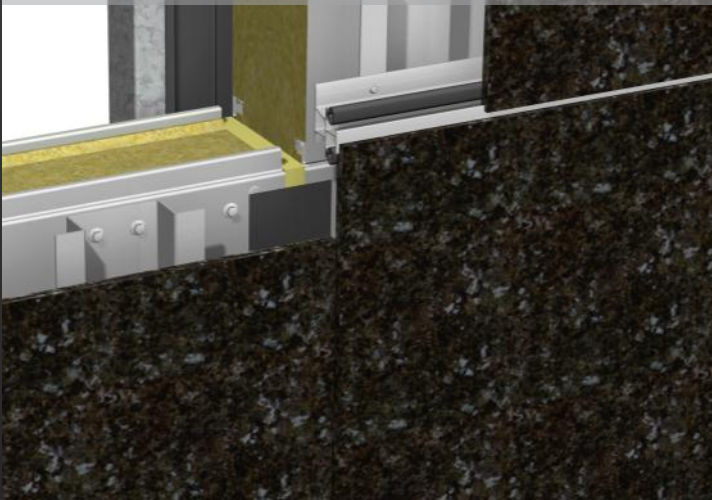
Rainspan™ ACM



Rainspan™ Parklex



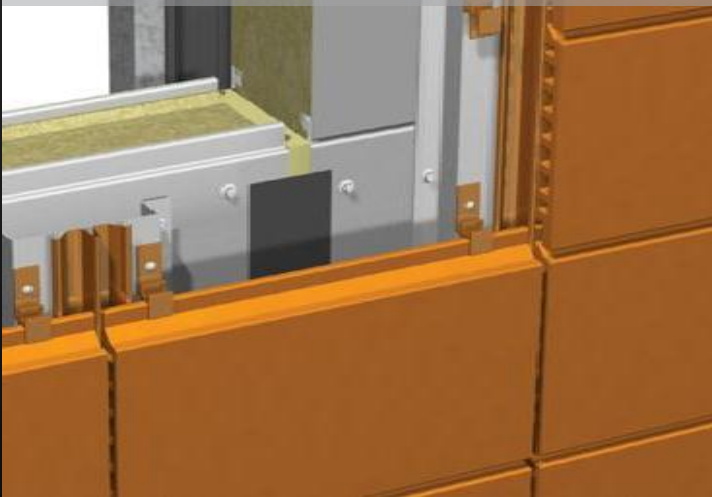
Rainspan™ Aerolite



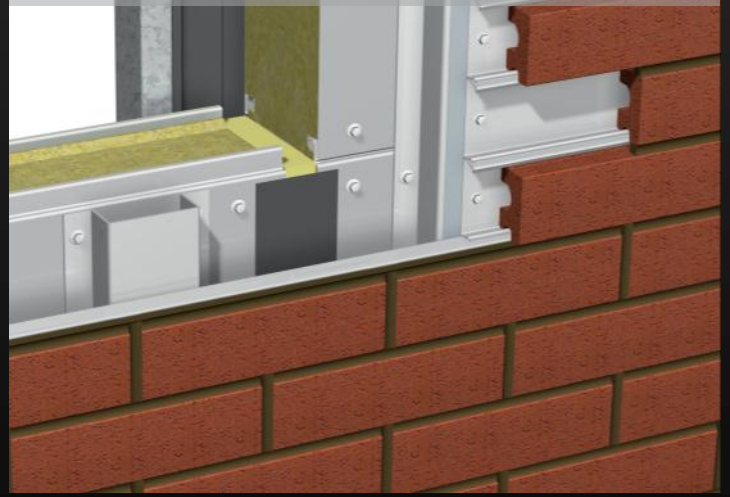
Rainspan™ Timber



Rainspan™ ArGeTon



Rainspan™ Corium





**eurobond**  
delivering low risk building solutions

**Eurobond Laminates Ltd**  
Wentlog Corporate Park  
Cardiff  
UK  
CF3 2ER

e: [sales@eurobond.co.uk](mailto:sales@eurobond.co.uk)  
t: +44 (0) 2920 776677  
f: +44 (0) 2920 369161

**CORIUM**

**Taylor Maxwell & Co Ltd**  
Ground Floor  
6080 Knights Court  
Solihull Parkway  
Birmingham Business Park  
Birmingham  
B37 7WY

e: [office@wienerberger.co.uk](mailto:office@wienerberger.co.uk)  
t: +44 (0) 845 303 2524  
f: +44 (0) 844 555 5770

Corium™ is a registered trademark of Wienerberger Ltd. Taylor Maxwell are authorised distributors of Corium™ in Great Britain with agreement from Wienerberger Ltd. © All images, text, logos and technical drawings in this document are reproduced with Wienerberger's permission.

Ref: Rsp/Cor- 07/11