

The natural choice in architectural composite panel solutions



Contents

Introduction	2
Product features	3
Product selector	4
Europanel	6
Rockspan	8
Firemaster	10
Rainspan	12
Technical support	14
Corus Colorcoat®	15

Eurobond Laminates has an overriding mission to design and deliver low risk building solutions and to manufacture products with exceptional environmental and fire performance.

Velocity, Sheffield



Boldon School, Newcastle



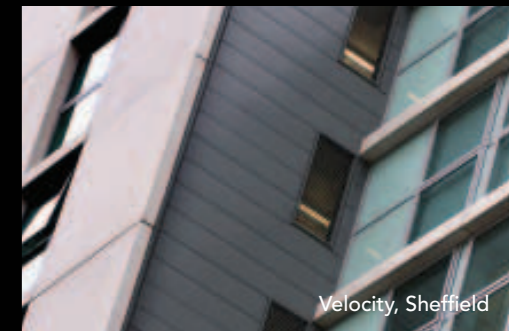
Mark Hall School, Harlow



Big Yellow, Edmonton



Channel Tunnel Rail Link, Stratford



Velocity, Sheffield

Eurobond Laminates Ltd

Since our establishment in 1981 we have been at the forefront of composite panel design and manufacture. Over 25 years of experience has resulted in the development of stone wool cored panel systems that provide superior fire and environmental performance, minimising risk in every way.

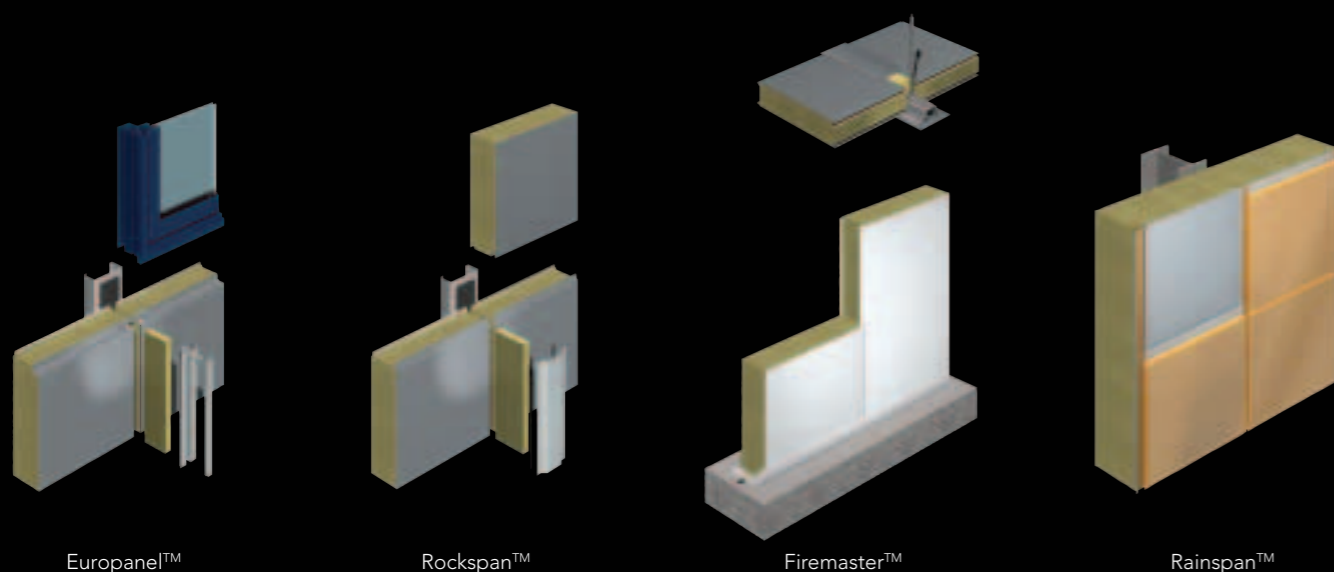
We invest heavily in product development, testing and manufacturing technology and as such, we have the ability to consistently produce high quality products to exacting tolerances, incorporating glazing and architectural features, together with a complementary range of doors.

All our panel systems provide 'built in' passive fire protection and

are tested and approved where appropriate to BS476 Part 22, BS EN 1364 Part 1, LPS1208, LPS1181 Grade Ext A and FM Global FM4880. At their core is a non-combustible stone wool insulant which guarantees the highest level of fire performance.

From 'Cradle to Cradle' all our panel systems have a low environmental impact. The added comfort of a

CarbonNeutral building envelope is also available when specified with the Corus Confidex Sustain® Guarantee. At end of life, both the steel facings and insulation can be recycled into virgin products with no appreciable loss of material.



Eurobond architectural composite wall panels

At the forefront of composite panel design and manufacture for over 25 years, we have built our reputation on customer care and high quality products that are competitively positioned.



Non-combustible

All Eurobond composite wall panel systems are manufactured with a proven non-combustible structural stone wool core. Panel systems are available offering up to 4 hours fire resistance.



Low smoke risk

Approximately half of all fire related fatalities and a third of all fire related injuries can be attributed to toxic smoke. Eurobond's stone wool core generates little smoke.



Low environmental impact

Eurobond cores have zero Ozone Depleting Potential (ODP) and zero Global Warming Potential (GWP). At the end of its useful life, all panel steel and insulation can be recycled and made into virgin material.



Architecturally flat

Architectural flatness can be achieved because all Eurobond panels are manufactured with cured stone wool cores that have dimensional stability.



Thermally efficient

All Eurobond products are engineered to help fulfil the energy performance and air leakage requirements demanded for the envelope of modern buildings. Relevant panel construction details have been thermally modelled, using the BRE approved finite element software package, Trisco.



Acoustically sound

Eurobond's range of composite wall panels offer acoustic solutions developed to make Approved Document E (2003) sound easier.

Composite panel product selector

Choosing a Eurobond composite panel from our comprehensive range couldn't be easier, assuring piece of mind and total confidence in the finished project.



Product Performance	Rockspan			Europanel		Firemaster			
	Lite	Extra	Ultima	Lite	Extra	Lite	Extra	Ultima	Ceiling
LPS 1181 Part 1 Ext - A	•	•	•	•	•				
LPS 1181 Part 2 Ext - B	•	•	•	•	•				
LPS 1181 Part 2 INT - 1						•	•	•	•
FM 4880 non-combustible	•	•	•	•	•	•	•	•	•
Euroclass A Core	•	•	•	•	•	•	•	•	•
HCFC, CFC and HFC-free core	•	•	•	•	•	•	•	•	•
Zero ODP core	•	•	•	•	•	•	•	•	•
Low GWP	•	•	•	•	•	•	•	•	•
Lightweight fast construction	•	•	•	•	•	•	•	•	•
1 hours fire resistance integrity and insulation	•	•	•	•	•	•	•	•	•
2 hours fire resistance integrity and insulation		•	•	•	•	•	•	•	•
4 hours fire resistance integrity and insulation			•			•			
Intrgrated window & door systems				•	•				
Integrated louvre systems				•	•				
Secret-fix joint				•	•				
Module freedom				•	•				

Thermal Performance - u value (w/m ² K)	Rockspan Lite	Rockspan Extra	Rockspan Ultima	Europanel Lite	Europanel Extra	Firemaster Lite	Firemaster Extra	Firemaster Ultima	Firemaster Ceiling
75mm thick panel	0.50	0.54		0.51	0.54	0.46	0.49		0.49
100mm thick panel	0.38	0.40		0.39	0.40	0.35	0.38		0.38
125mm thick panel	0.30	0.33		0.31	0.33	0.29	0.30		0.30
150mm thick panel	0.25	0.27	0.27	0.26	0.27	0.24	0.26	0.27	0.26
175mm thick panel	0.22	0.23		0.22	0.23	0.21	0.23		0.23
200mm thick panel		0.20	0.20		0.20				

Corner panels*	Rockspan Lite	Rockspan Extra	Rockspan Ultima	Europanel Lite	Europanel Extra
Factory mitred corners	•	•	•	•	•

Fire performance (BS476 Part 22 / BS EN ISO 1364)		Rockspan			Europanel		Firemaster			
		Lite	Extra	Ultima	Lite	Extra	Lite	Extra	Ultima	Ceiling
75 mm thick panel	Integrity (mins)	60	60		60	60	60	60		
	Insulation (mins)	30	60		30	60	30	60		
100mm thick panel	Integrity (mins)	90	120		60	60	90	120		60
	Insulation (mins)	60	120		30	60	60	120		60
125mm thick panel	Integrity (mins)	90	120		90	90	90	120		60
	Insulation (mins)	60	120		60	90	60	120		60
150mm thick panel	Integrity (mins)	120	120	240*	120	120	120	120	240*	120*
	Insulation (mins)	90	120	240*	90	120	90	120	240*	120*
175mm thick panel	Integrity (mins)	120	180**	240*	120	120	120	180**		120*
	Insulation (mins)	90	180**	240*	90	120	90	180**		120*
200mm thick panel	Integrity (mins)		240**			120		180**		
	Insulation (mins)		240**			120		180**		

*Panel joint stitched on both sides at 300mm centres.
** 0.7mm steel faces to both sides

Sound Performance Weighted sound reduction Index Rw (dB)	Rockspan Lite	Rockspan Extra	Rockspan Ultima	Europanel Lite	Europanel Extra	Firemaster Lite	Firemaster Extra	Firemaster Ultima	Firemaster Ceiling
75mm thick panel	27.9	29.4		27.9	29.4	27.2	29.2		29.4
100mm thick panel	28.8	30.7		28.8	30.7	28.5	30.2		30.7
125mm thick panel	29.7	31.4		29.7	31.4	29.0	30.9		31.4
150mm thick panel	30.5	32.4	32.4	30.5	32.4	30.1	31.8	32.4	32.4
175mm thick panel	31.0	33.1	33.1	31.0	33.1	30.8	33.1		33.1
200mm thick panel		34.5	34.5		34.5				

Module Sizes (nominal cover width)	Rockspan Lite	Rockspan Extra	Rockspan Ultima	Europanel Lite	Europanel Extra	Firemaster Lite	Firemaster Extra	Firemaster Ultima	Firemaster Ceiling
600mm	•	•	•						
900mm	•	•	•						
1000mm	•	•	•						
1100mm (export only)						•	•	•	•
1200mm	•	•	•			‡	‡	‡	‡
300mm to 1200mm (#mm increments)				•	•				

Pre-Finished Steel Product (coating systems)	Rockspan Lite	Rockspan Extra	Rockspan Ultima	Europanel Lite	Europanel Extra	Firemaster Lite	Firemaster Extra	Firemaster Ultima	Firemaster Ceiling
Corus Colorcoat HPS200 Ultra	•	•	•	•	•				
Corus Colorcoat Prisma	•	•	•	•	•				
Corus S8197 Foodsafe						•	•	•	•
Corus S5824 White Liner	•	•	•	•	•	•	•	•	•

Finishes	Rockspan Lite	Rockspan Extra	Rockspan Ultima	Europanel Lite	Europanel Extra	Firemaster Lite	Firemaster Extra	Firemaster Ultima	Firemaster Ceiling
Satin Line (micro rib)	•	•	•	•	•				
Architecturally flat		•	•		•	•	•	•	•
Minibead						•	•		•

* For performance qualification of our Rainspan product, please contact Eurobond's Technical Department due to variations in product specific requirements.



Europanel

Europanel™ combines architectural style and design freedom with low environmental impact and passive fire protection 'built in'.



Mark Hall School, Harlow



Ipswich Hospital, Ipswich



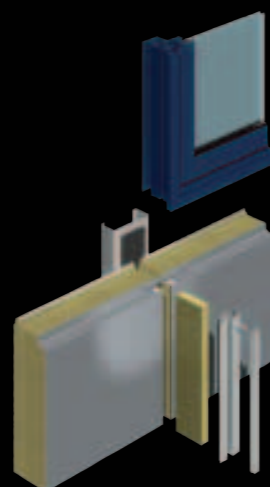
Saville ADC, Ireland

The Europanel™ system has been developed as a 'total wall' solution and is cleverly designed to be integrated with glazing and louvre components*. Modular flexibility in 50mm increments between 300mm and 1200mm provides greater freedom for architectural expression and is unique to Eurobond's flagship product.

All Eurobond panels are manufactured to create a weather tight system, helping to increase the thermal performance of a building in line with the Building Energy Performance Directive 2003.

Horizontal joints can be expressed with the addition of the premier gasket to create a 12mm joint or specified with a 5mm shadow line joint, and all can be finished with an external Satin Line (Micro rib) profile.

In addition, all Europanel™ systems can achieve structural integrity with spans in excess of 6 metres, substantially reducing the need for secondary steelwork. This allows for the rapid construction of a weather tight building and the early commencement of internal works, greatly reducing build costs and complexity.



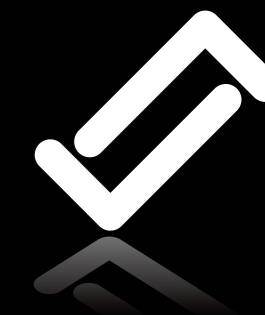
Europanel Lite™

The secret-fix joint and modular flexibility offered by this product provides an aesthetically pleasing solution, ideal for high profile buildings. Like all our products Europanel Lite's™ non-combustible stone wool core offers high levels of fire resistance and panels are suitable for horizontal or vertical application.

Europanel Extra™

With it's higher density non-combustible core Europanel Extra™ can further enhance the fire performance of any building to provide up to 2 hours fire resistance. All Europanel Extra™ systems are environmentally friendly. At the end of its useful life, all panel steel and insulation can be recycled and made into virgin material with no appreciable loss. This 'Cradle to Cradle' cycle has little impact on the environment with zero global warming or ozone depleting potential.

* For further information on glazing and louvre components suitable for use with Europanel please contact Eurobond Sales on 02920 77 66 77 or alternatively email us at sales@eurobond.co.uk.



Rockspan

Rockspan™ is the cost effective external wall panel solution providing 'built in' passive fire protection for large scale buildings and is suited to both vertical and horizontal installation.



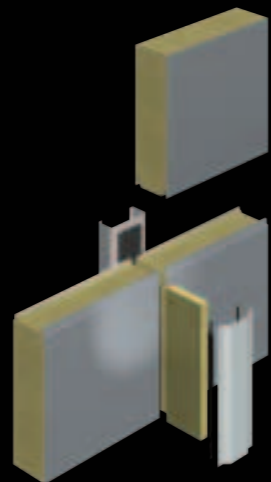
The specification and joint design of Rockspan™ panels enables spans in excess of 6 metres to be achieved, thereby reducing secondary steelwork, complexity and the cost of construction.

Clean internal surfaces maximise usable space and provide flexibility for racking systems in large warehouse and distribution premises.

Rockspan panels ensure rapid construction, eliminating wet trades and promote single component through wall construction. Panel thicknesses up to 200mm ensure exceptional thermal efficiency and help to reduce energy consumption and cost.

Rockspan Lite™

Rockspan Lite™ has a through-fixed joint detail, a panel type extensively used within the design of industrial and distribution buildings. The through-fixed panel is manufactured using an environmentally friendly stone wool core; ensuring low environmental impact and excellent fire protection are included with the



application of one unique system. All Rockspan™ panel systems are suitable for horizontal and vertical installation and can be finished with an external Satin Line (Micro rib) profile perfectly tailored for individual design requirements.

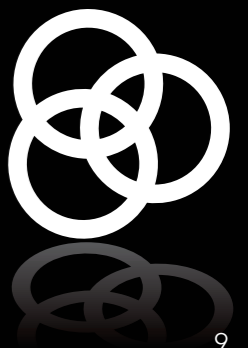
Rockspan Extra™

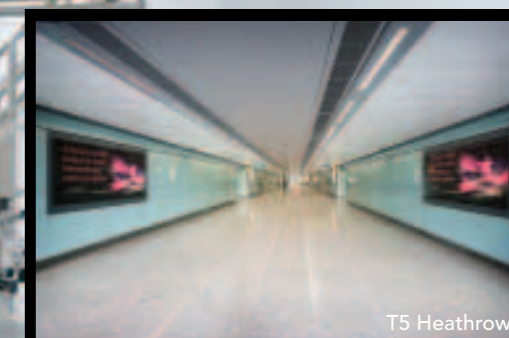
Manufactured with a higher density structural stone wool core, Rockspan Extra™ is quick and simple to install, prompting the commencement of early internal works and greatly reducing building cost with the reduction of secondary steel work through enhanced spanning capabilities.

Rockspan Ultima™

Rockspan Ultima™ is the result of an extensive long term design project between Eurobond and Rockwool. This system has been developed to provide up to 4 hours fire resistance, in both integrity and insulation. Installing

this panel system helps ensure life safety and business continuity in the event of a fire, ideal for large scale storage providers. Available in both Satin Line (Micro rib) and an architecturally flat external profile Rockspan Ultima™ ensures style isn't compromised by safety.





T5 Heathrow



Noon Products South Hall



Kerry Gold Staffordshire

Firemaster

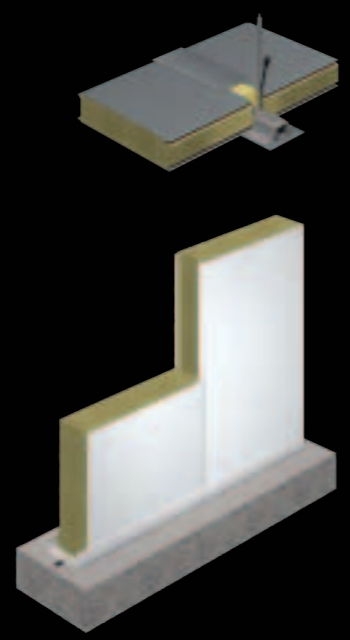
Internal Wall and Ceiling panel system

The Firemaster™ system has been developed as a 'total internal wall and ceiling' solution ideally suited for the construction of non load bearing internal partition walls and ceilings. This approved system provides a tested fire resistance in order to perform as internal firewalls, ceilings or compartmentation walls. Firemaster™ is designed to be integrated with Eurobond's Firemaster doors for a complete fire resistant solution.

All Firemaster™ wall and ceiling panels are insulated and sealed and are available with a foodsafe coating, providing a smooth, anti-static internal surface. Firemaster™ is an ideal solution for storage and food processing applications, along with micro electronics facilities and pharmaceutical applications, where protected zones or clean rooms are often required.

Firemaster Wall Lite™

This system gives the optimum balance between fire performance, cost and weight and has been designed specifically as a practical, contractor-friendly solution. There's no better choice where fire resistance is concerned. Easy and simple to install, Firemaster Wall Lite™ acts as a superb internal lining, wall or partition.



Firemaster Wall Extra™

Firemaster Wall Extra™ has undergone extensive development to become a class leading fire rated wall panel, exclusively designed for internal use. Durability, structural integrity and fire performance were at the forefront of this systems development. Thoroughly proven and tested, this panel system is ideal for a wide range of applications including cold store rooms and food processing plants.

Firemaster Wall Ultima™

Developed in conjunction with Rockwool, Firemaster Wall Ultima™ provides the perfect solution for compartmentation of high risk areas where up to 4 hours fire resistance is required. Business continuity and life safety are dramatically increased thanks to the integrity and insulation of this unique system, ideal for use in Data Centres.

Firemaster Ceiling™

Firemaster Ceiling™ is a class leading fire-rated ceiling panel suitable for both walk on (access and maintenance) and non walk on use. It's the ideal solution to compartmentalise a building when protection and life safety are a priority*.

*A range of complimentary fire doors are available from our sister company Eurobond Doors.



Rainspan

Rainspan™ uniquely blends together the benefits of architectural façades with composite panel construction, allowing specifiers the freedom of expression thanks to a range of exciting finishes.



Evolving from the identification of our customer needs Rainspan™ has successfully been developed as a robust insulating panel system, offering the perfect structural support for a range of rainscreen systems.

Rainspan™ Linear

In collaboration with our sister company Euroclad Façades, the UK's market leader in Aluminium Composite Manufacture and Metal Composite Manufacture rainscreen panel systems, we are pleased to offer Rainspan™ LINEAR; a unique system that combines all the well established benefits associated with stone wool cored composite panels and those of Euroclad Façades LINEAR rainscreen products.

The Rainspan™ LINEAR complete wall system provides a façade offering superior and outstanding surface colour uniformity, delivering an unrivalled range of high quality finishes. The LINEAR rainscreen is fabricated from



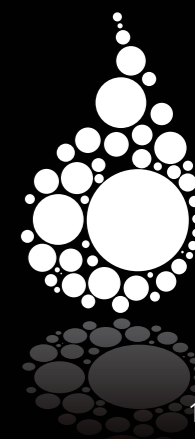
Mitsubishi's ALPOLIC/fr material allowing designers and contractors complete freedom of expression using both standard and bespoke details. A range of variants including red granite, marble and copper are available*.

Rainspan's™ robust structural support is ideally suited to carrying a range of rainscreen systems whilst still achieving the perfect thermal performance and weather tight finish required to achieve air permeability less than 10m³/hr/m².

Rainspan's™ easy installation quickly achieves a weather tight building allowing early commencement of internal works whilst acoustic performance and fire protection requirements are built in thanks to our stone wool insulating core. All steel and stone wool can be fully recycled achieving a 'Cradle to Cradle' approach to manufacturing;

like all our products Rainspan™ has a low environmental impact with zero ozone depletion and zero global warming potential.

* Please contact our sales team for further information on 02902 77 66 77 or email us at sales@eurobond.co.uk



Technical support



To assist in a range of construction topics concerning our product range, Eurobond provide a comprehensive Technical Service which can assist in a variety of areas.

Project Specific Design Advice

As well as the standard information and range of details available, project specific information can be developed to cover:

- Load/span calculations
- Development of bespoke CAD details

In Depth Fire Performance Knowledge

Eurobond has extensive knowledge of the performance of composite panels in fires. We have carried out a wide range of recognised

and bespoke fire tests, as well as working closely with acknowledged fire experts. This enables us to:

- Provide guidance in selecting the most appropriate products to achieve the required fire performance
- Provide correct detailing for each product
- Advise on the Building Regulations and insurance company specific fire requirements

Training

We employ dedicated applications engineers to carry out site training and also conduct a more comprehensive range of training courses at either customer premises or at our factory in Cardiff.

This includes:

- Installation training
- Product application training to ensure the correct specification and use of Eurobond products
- The impact of changes to relevant legislation, enabling customers to make informed decisions

Eurobond has its own in house research and development staff who are continually looking to improve the performance of existing products. Experience gained through research and development allows Eurobond to speak with authority on the performance of its panel systems, confident in the knowledge that advice given is based on information gained through testing, prototyping and practical experience.

Members of Eurobond's Technical Department are available to attend site meetings to provide expert technical advice at the design stage, during installation and post installation.

Corus Colorcoat® products and services

To ensure the long term performance and appearance of the building, all Eurobond panels are offered with Corus Colorcoat® pre-finished steel.



The Colorcoat® brand provides the recognised mark of quality and metal envelope expertise exclusively from Corus. Over the course of 40 years Corus has developed a range of technically leading Corus Colorcoat® pre-finished steel products which have been comprehensively tested and are manufactured to the highest quality standards. These are supported by a range of services such as comprehensive guarantees, colour consultancy and technical support and guidance.

Colorcoat HPS200® Ultra

The latest generation product for roof & wall cladding, Colorcoat HPS200® Ultra offers an exciting new colour range and dramatically improved colour and gloss performance. Maintenance and inspection free, Colorcoat HPS200® Ultra delivers twice the colour and gloss retention of standard plastisols, and is now guaranteed for up to 40 years, combining outstanding performance with unrivalled reliability.

Colorcoat Prisma®

The ideal choice to deliver eye-catching buildings that will stand the test of time. Technically and aesthetically superior to PVDF

(PVF2), Colorcoat Prisma® is readily available in the most popular solid and metallic colours. All backed up with the unique Confidex® Guarantee providing cover for up to 25 years.

Repertoire® Colour Consultancy

The Repertoire® Colour Consultancy can advise on colours and colour strategies using a range of standard shades, as well as discussing individual bespoke colour requirements. Corus can match almost any shade from physical swatches to commonly used references such as RAL, NCS and British Standard and more unusual standards.

Confidex® Guarantee

Offers the most comprehensive guarantee for pre-finished steel products in Europe and provides peace of mind for up to 40 years. Unlike other guarantees, Confidex® covers cut edges for the entirety of the guarantee period and does not require mandatory annual inspections.

Confidex Sustain®

Offers the first CarbonNeutral building envelope in the world. It provides a combined guarantee which covers the durability of the Colorcoat® pre-finished steel product and guarantees to offset unavoidable CO₂ emissions from the pre-finished steel and Colorcoat® assessed cladding system, including fixings and insulation, from cradle to cradle. More than just offsetting, the aim is to encourage specification of the most sustainable pre-finished steel products and cladding systems.

Colorcoat® Building Manual

Developed in consultation with architects and other construction professionals, the Colorcoat® Building manual incorporates over 40 years of Colorcoat® expertise. It contains information about sustainable development and the creation of a sustainable specification.

Colorcoat® Technical Papers

Working closely with the Corus Colorcoat® Centre for the Building Envelope based at Oxford Brookes University and the Steel Construction Institute, Corus has produced a number of technical papers. These address key construction issues such as the creation of an air-tight building envelope and end of life options for pre-finished steel cladding systems.



For more information about Corus Colorcoat® products and services visit www.colorcoat-online.com or call the Colorcoat Connection® helpline on +44 (0)1244 892434.

Colorcoat, Colorcoat Connection, Colorcoat HPS200 Ultra, Confidex, Confidex Sustain, Prisma and Repertoire are trademarks of Corus.



Northampton University, Northampton

Eurobond Laminates Ltd.
Wentloog Corporate Park
Wentloog
Cardiff
CF3 2ER
United Kingdom

Tel: +44(0)29 20 77 66 77
Fax: +44(0)29 20 36 91 61
Email: sales@eurobond.co.uk

For further information on Eurobond, our projects and recent successes, please visit:

www.eurobond.co.uk